

B+BTEC

PROJECTS

B+BTEC

www.bbtectools.com

ICCONS™
Serious Connections

ChemSelect

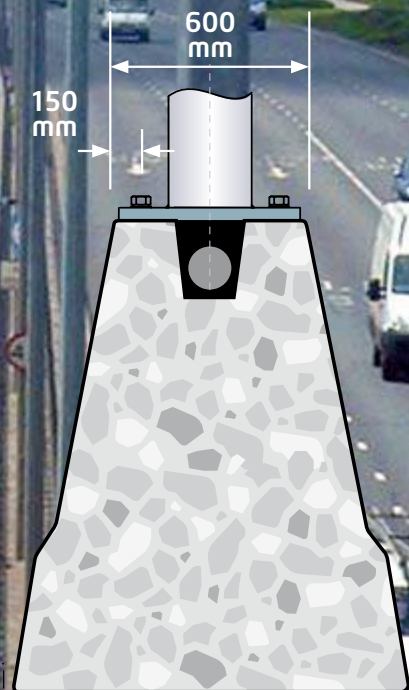
ICCONS™
Serious Connections

ChemSelect

ICCONS™
Serious Connections

12 mtr Lighting Columns

Although the Britpave barrier is essentially un-reinforced it was still imperative that the load resistance of the anchor system met the stringent requirements detailed in the Highways Agency Design Document BD26/04.



FCL FIXING
CENTRE
LIMITED

B+BTEC

www.bbtectools.com

ICCONSTM
Serious Connections

ChemSelect

ICCONSTM
Serious Connections

ChemSelect

ICCONSTM
Serious Connections



TNO Fatigue Test

A comprehensive test programme provided reliable performance data and the SSR-128 was approved for use to fit 12 metre high columns to the barrier on the recently completed A12 Stanway to Spring Lane central reservation improvements project.

TNO innovation
for life

Fatigue loading of resin anchors
Report nr. 25.5-07-07

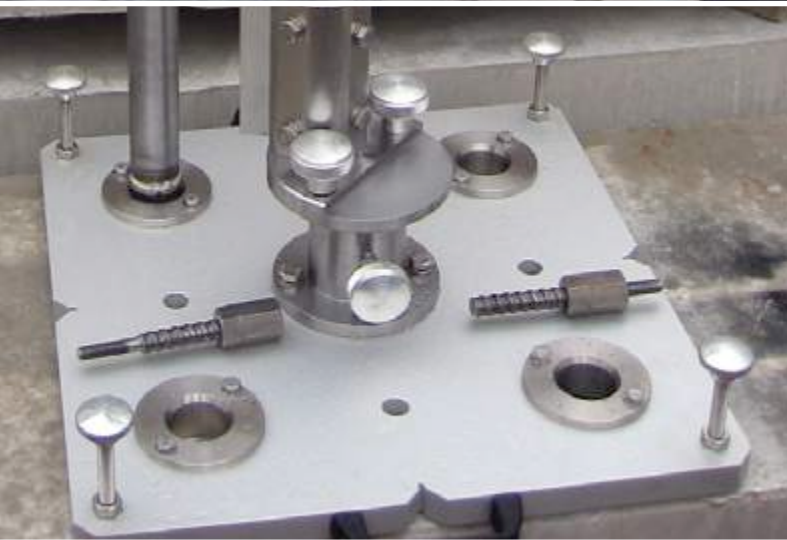


www.bbtectools.com

B+BTEC



Concrete Slip Form Safety Barrier

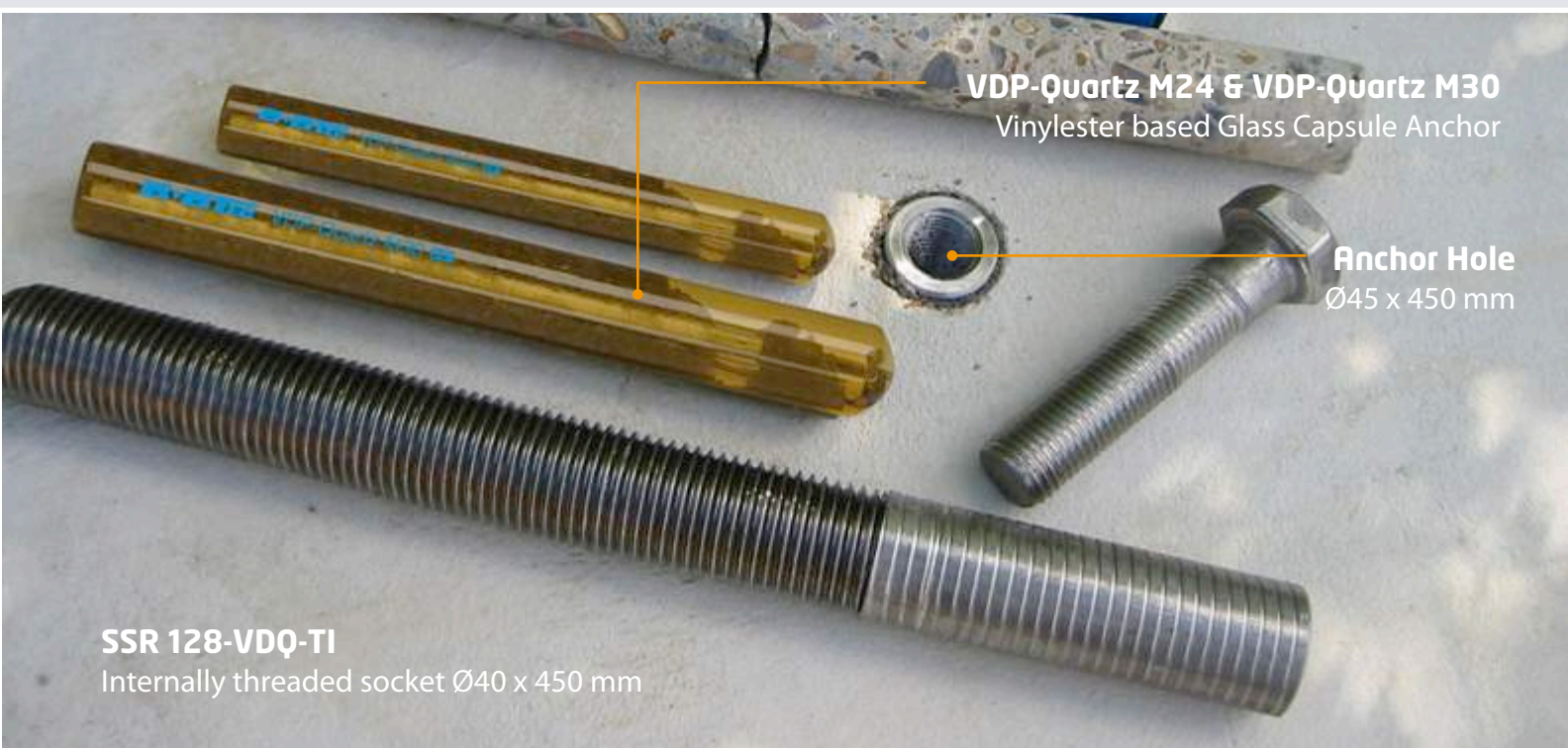
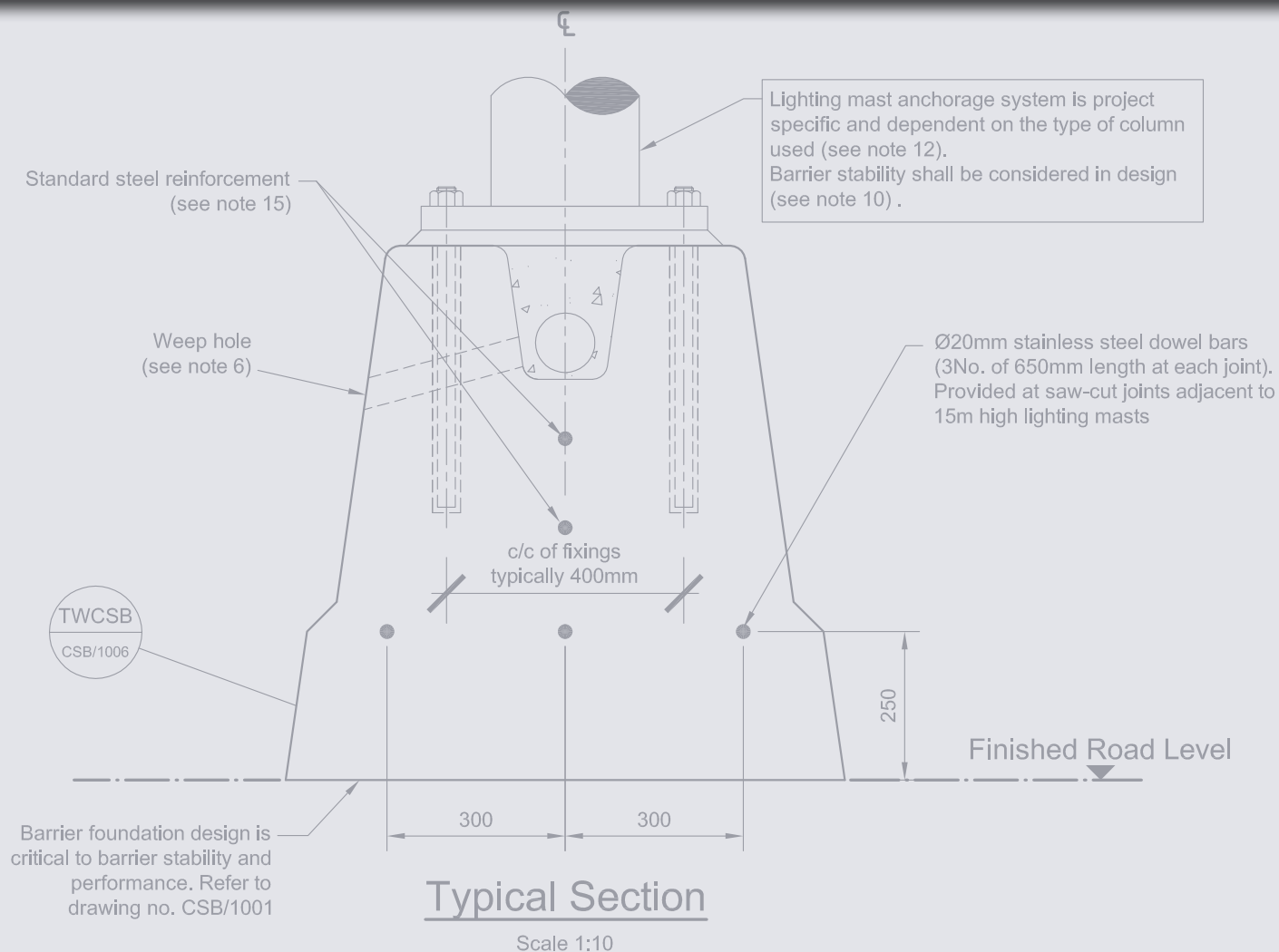


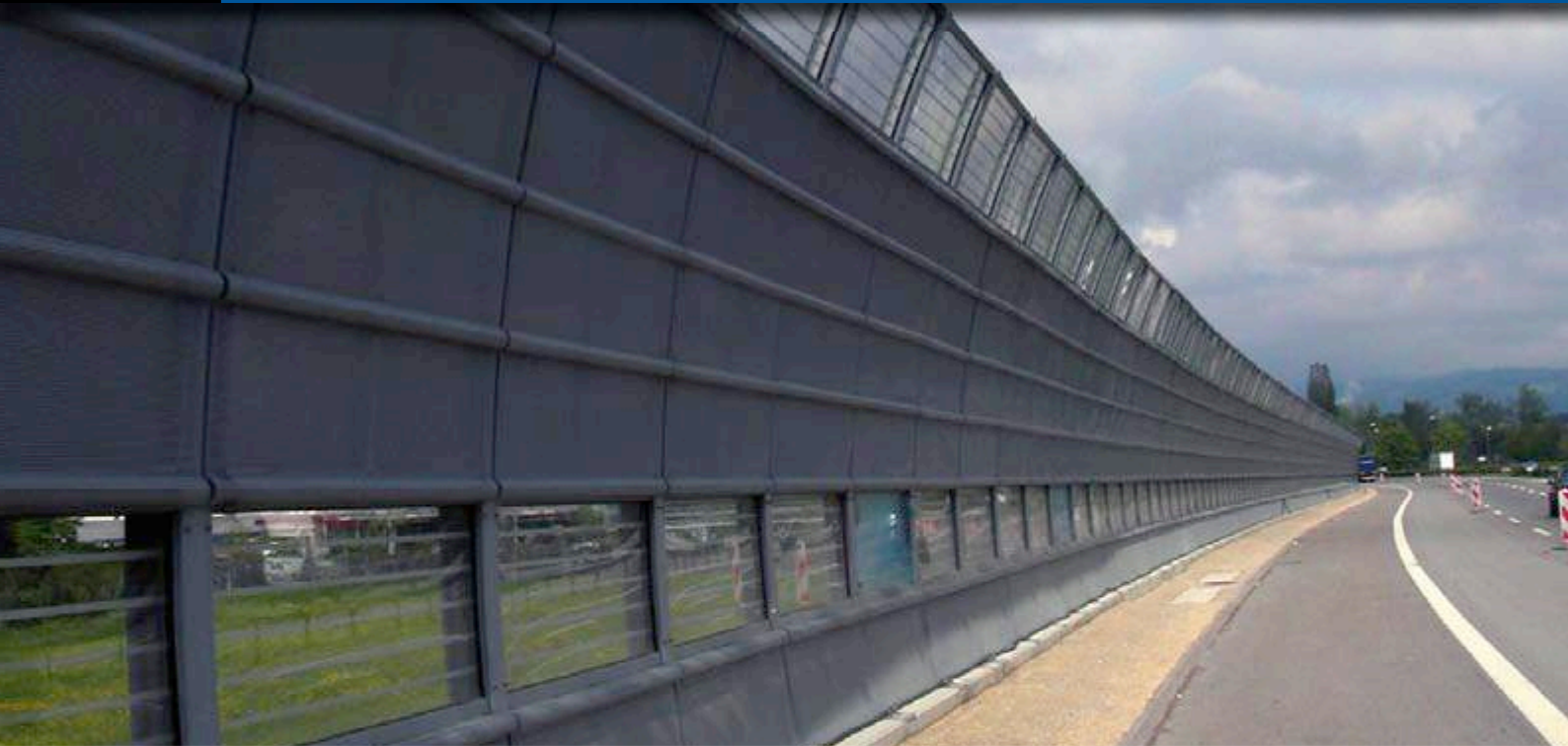
Karat 164 CSB

Diamond Core Drilling Rig specially designed for very precise drilling of the anchor holes for the installation of Flange Plate Lighting Poles.

Base Plate Design allows for very fast set-up and drilling while maintaining the highest level of accuracy.

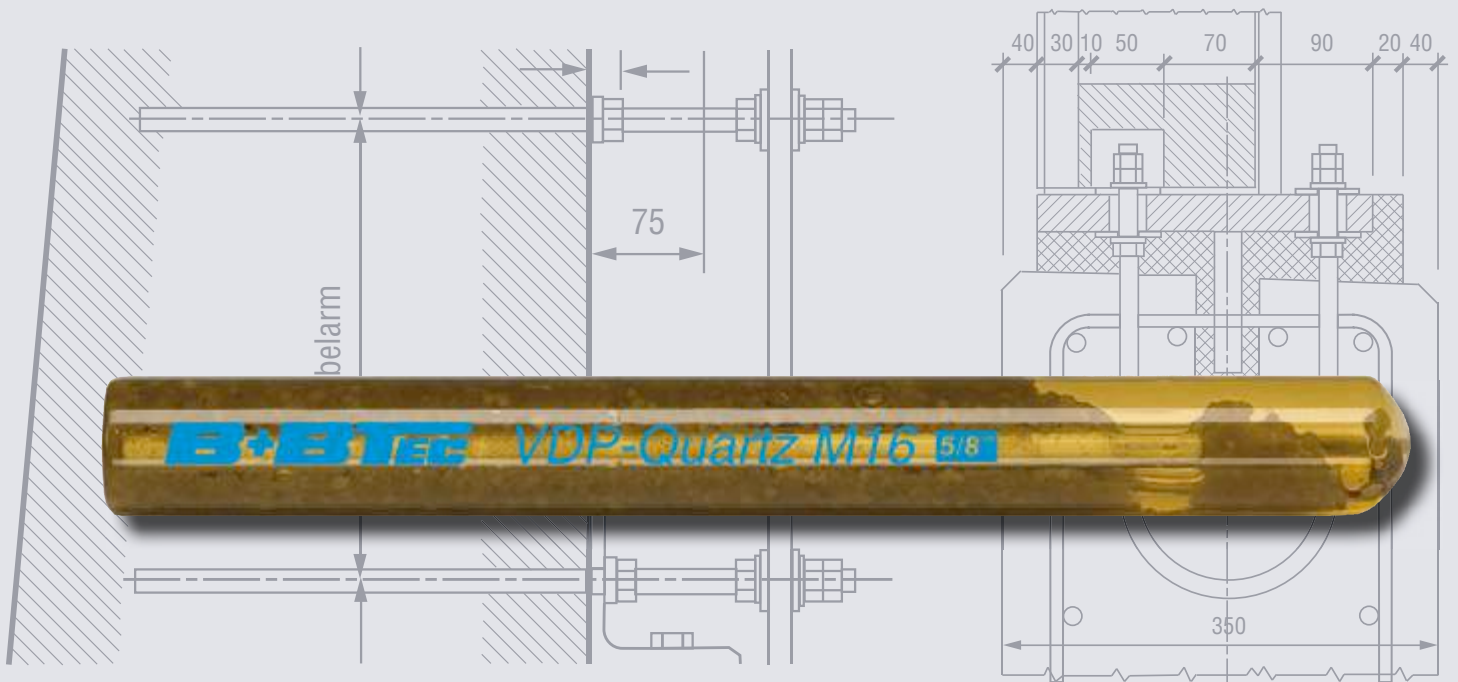






Project Data

Anchor Type	Anchor Rod	Steel Quality
VD-Q 16	M16 x 225 mm	HCR 1.4529
VD-Q 16/2t	M16 x 350 mm	HCR 1.4529
VD-Q 20/1.5t	M20 x 360 mm	HCR 1.4529
VD-Q 20/1.5t	M20 x 380 mm	HCR 1.4529
VD-Q 20/2t	M20 x 480 mm	HCR 1.4529
VD-Q 24/1.5t	M24 x 460 mm	HCR 1.4529
VD-Q 24/2t	M24 x 540 mm	HCR 1.4529





Project Data

Anchor Type	:	VD-Q
Anchor Dimension	:	M20/2t M24/1,5t
Anchor Rod	:	M20 x 480 mm M24 x 540 mm
Steel Quality	:	A4 Wst. 1.4462



Anchor Dimension : M20
Anchor hole : Diamond Drilled
Anchor Type : BIS-PE Pure-Epoxy 3:1





Stuttgart, Germany



Amsterdam, Netherlands

B+BTEC

www.bbtectools.com

ICCONS™
Serious Connections

ChemSelect

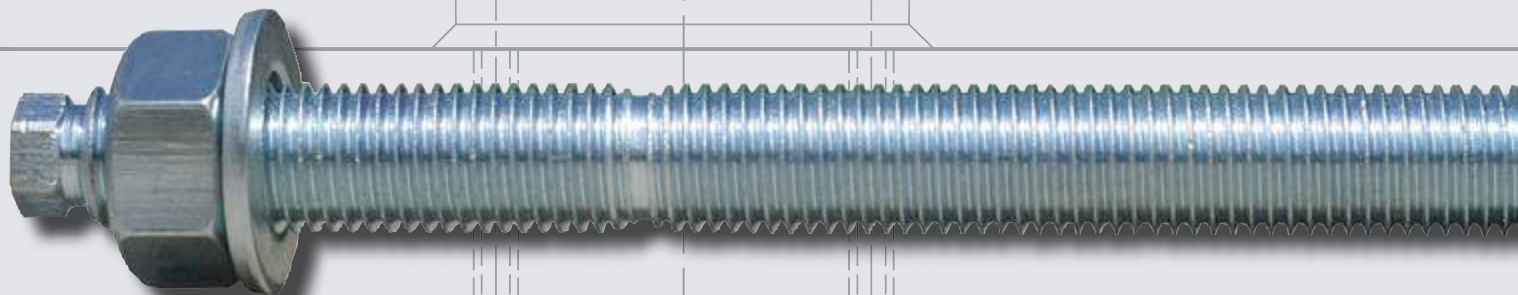
ICCONS™
Serious Connections

ChemSelect

ICCONS™
Serious Connections

VDP-Quartz

Vinylester based Glass Capsule Anchor



ASTA-AS Typically Steel 8.8 Zinc Plated





Fender Installation

A number of incorrectly installed and even missing anchors forced port authorities to order the complete re-installation of these fenders.

Installed anchors were drilled out and replaced with VDP-Q M30.



B+BTEC

www.bbtectools.com

ICCONSTM
Serious Connections

ChemSelect

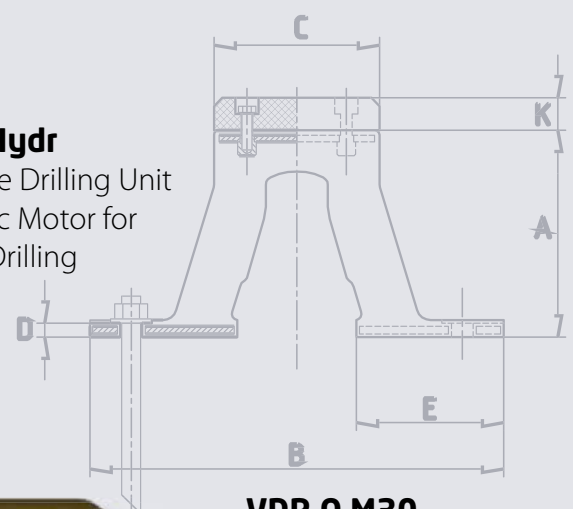
ICCONSTM
Serious Connections

ChemSelect

ICCONSTM
Serious Connections

Project Data

Anchor Type	:	VDP-Q
Anchor Dimension	:	M30
Anchor Rod	:	ASTA M30 x 360 mm
Steel Quality	:	Steel 8.8 Zinc plated
Embedment Depth	:	280 mm
Drilling Method	:	Diamond
Coring Machines	:	Karat 164 Karat 164-Hydr.





Fender Installation





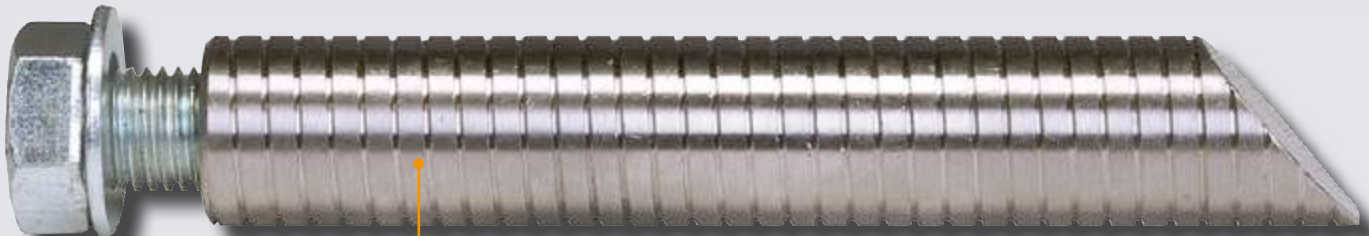
Project Data

Anchor Type	:	VD-I 30
Anchor Dimension	:	45 x 280 mm
Anchor Bolt	:	M30
Steel Quality	:	5.8 Zinc Plated
Anchor Hole Diameter	:	Ø50 mm
Embedment Depth	:	280 mm
Drilling Method	:	Diamond



VDP-UW M30

Glass Capsule Anchor
designed for
Underwater Applications



VD-I 30

Internally Threaded Socket for Flush Mount Anchoring



Fender Reinforcement

After a collision with a fender protecting a bridge, a second fender was placed in front. The two fenders were connected by a steel construction to be able to withstand the extreme high shear loads resulting from a future collision



Project Data

Anchor Type	: VDP (4 x M30 per hole)
Anchor Rod	: ASTA M64 x 700 mm
Steel Quality	: Steel 8.8 Hot Dip Galvanized
Anchor Hole Diameter:	Ø70 mm
Embedment Depth	: 600 mm
Drilling Method	: Diamond





Strukton
Rail

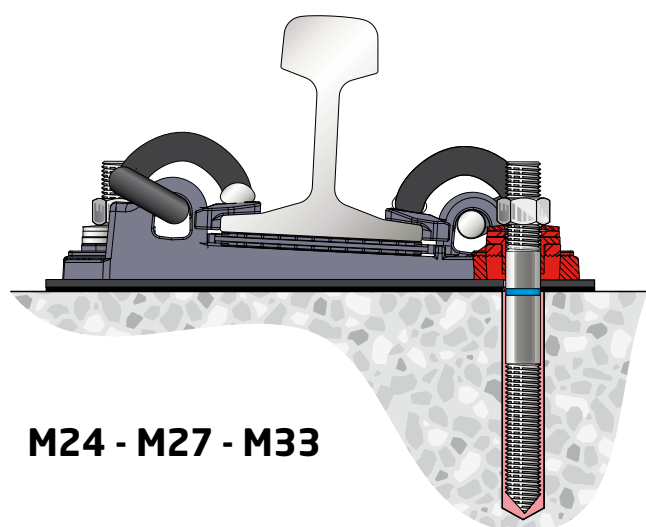
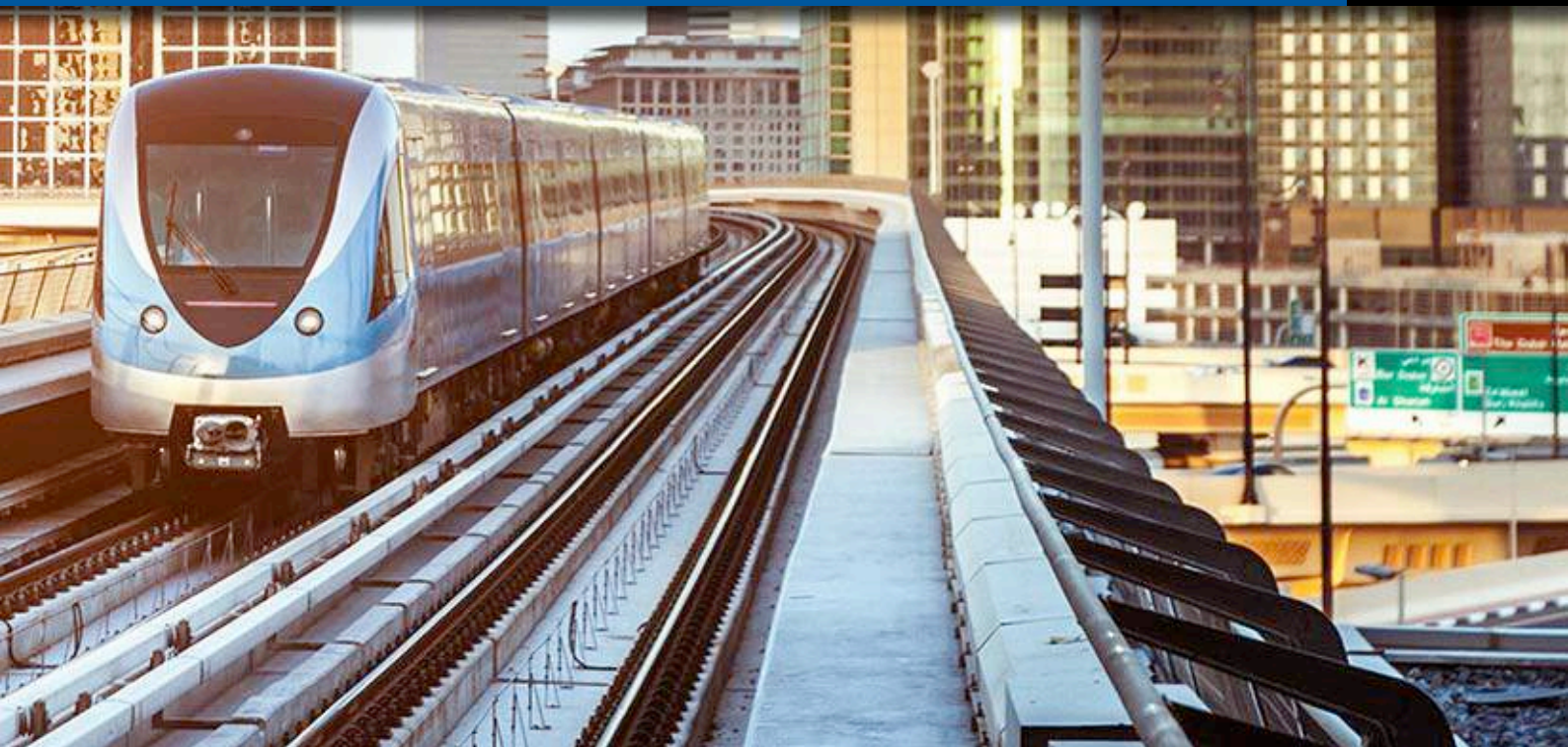


The project includes the design and construction of Special Multi Spindle Core Drilling Rigs and the Supply of Pure Epoxy Injection Mortar for three lines: line 4 (yellow), line 5 (green) and line 6 (purple) (see metro map), which will have 25 stations. Construction will include 64.6 kilometres of rail consisting of:

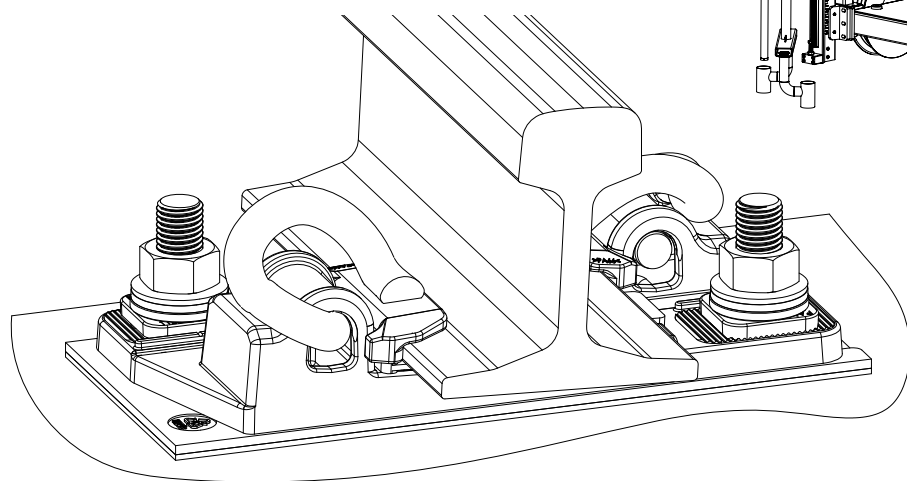
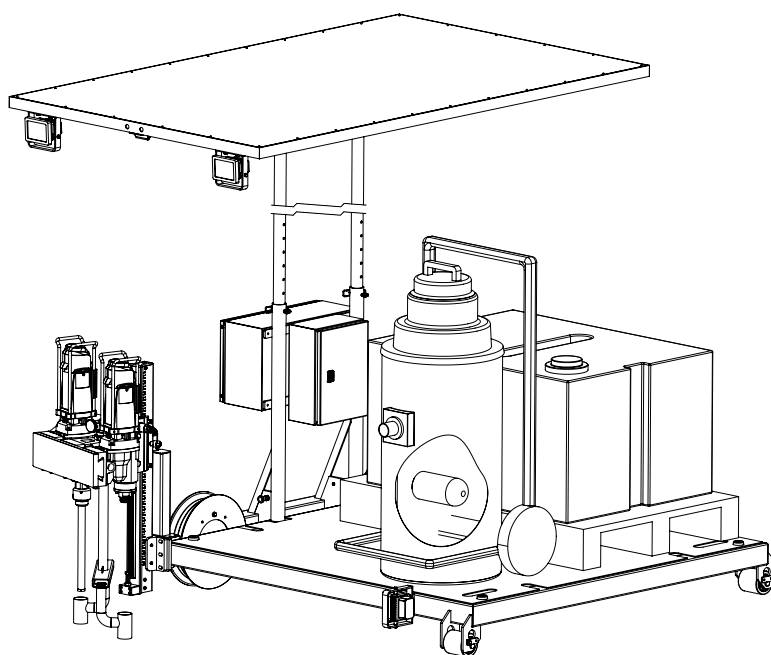
- 29.8 kilometres of viaducts
- 26.6 kilometres of underground tracks
- 8.2 kilometres of overground tracks

The six lines comprising the Riyadh metro project will span more than 176 kilometres, making it the largest subway under development in the world at present. Construction will require 600,000 tonnes of steel, 4.3 million cubic metres of concrete and will employ over 30,000 people





M24 - M27 - M33





1

VD-RA Rail Anchor for light rail installation.
Rotterdam, Netherlands 1999

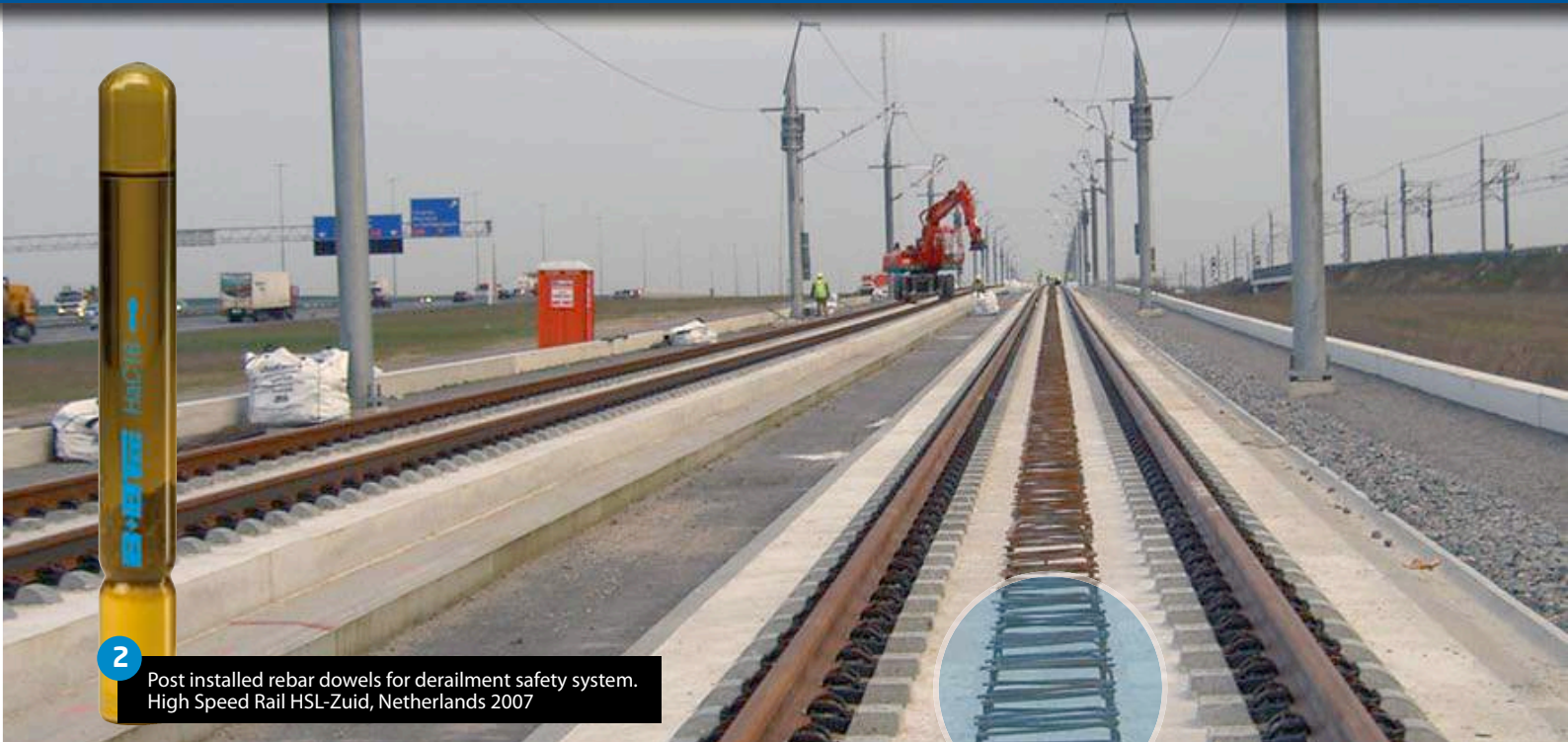
B+BTECwww.bbtectools.com**ICCONS™**
Serious Connections

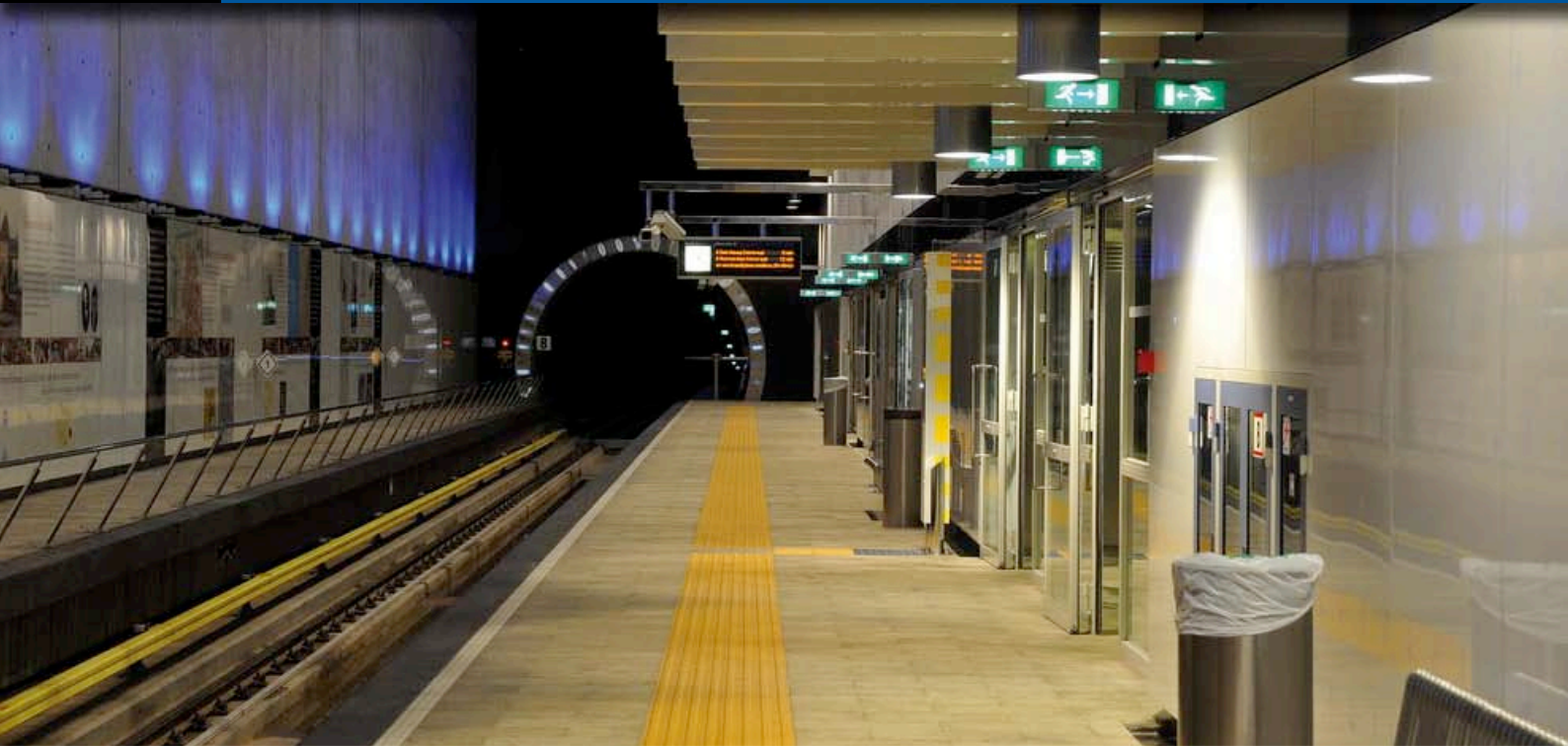
ChemSelect

ICCONS™
Serious Connections

ChemSelect

ICCONS™
Serious Connections





Strut Frame Installation

During the excavation of the underground metro station several strut frames were installed in the 18 mtr deep construction pit to prevent collaps.

The frames were mounted on support brackets anchored with VDP M30 capsules.



B+BTEC

www.bbtectools.com

Project Data

Anchor Type	:	VDP
Anchor Dimension	:	M30
Anchor Rod	:	ASTA M30 x 360 mm
Steel Quality	:	Steel 8.8 Zinc plated
Embedment Depth	:	280 mm
Anchor hole	:	Diamond Drilled

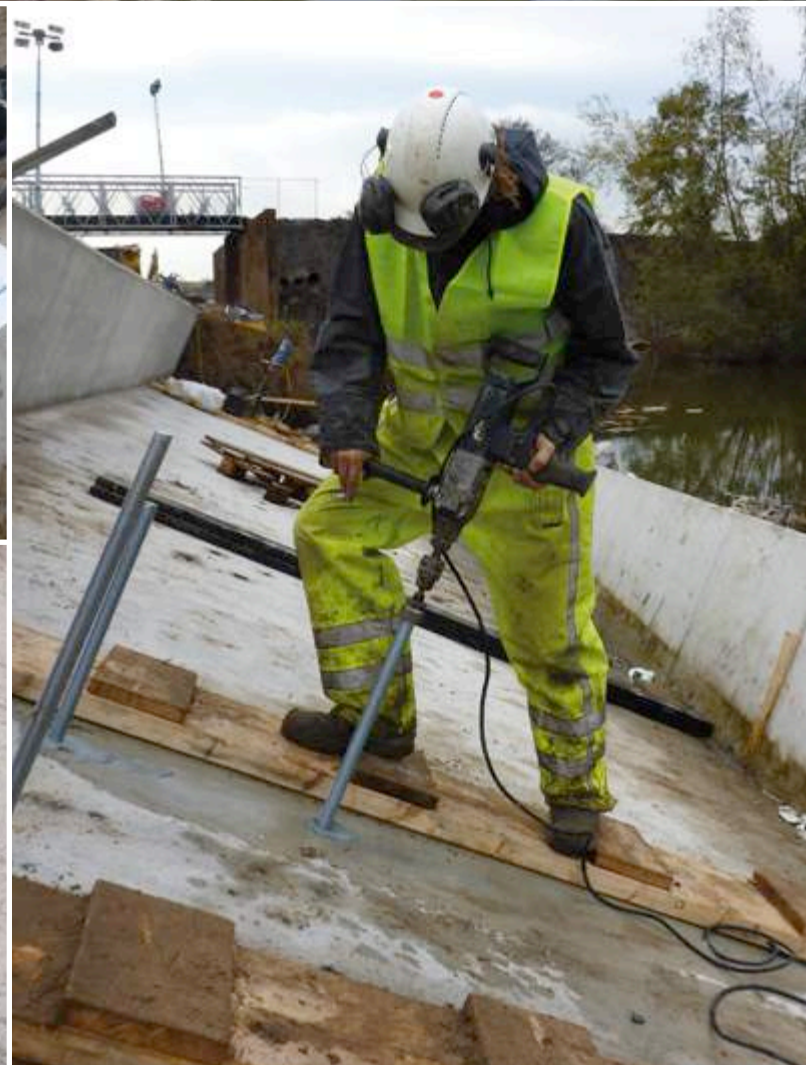




Bridge Deck Incident

During Construction on a cross road of the Metro Line Gaasperplas and A9 Gaasperdammerweg, Amsterdam an accident occurred: 1 out of 3 required 210t Bridge Decks slid off a Low Loader and ended up in a canal.

The Bridge Deck was salvaged using 16 B+BTec VDP-Q M30 Anchors.



B+BTec

www.bbtectools.com

ICCONS
Serious Connections

ChemSelect

ICCONS
Serious Connections

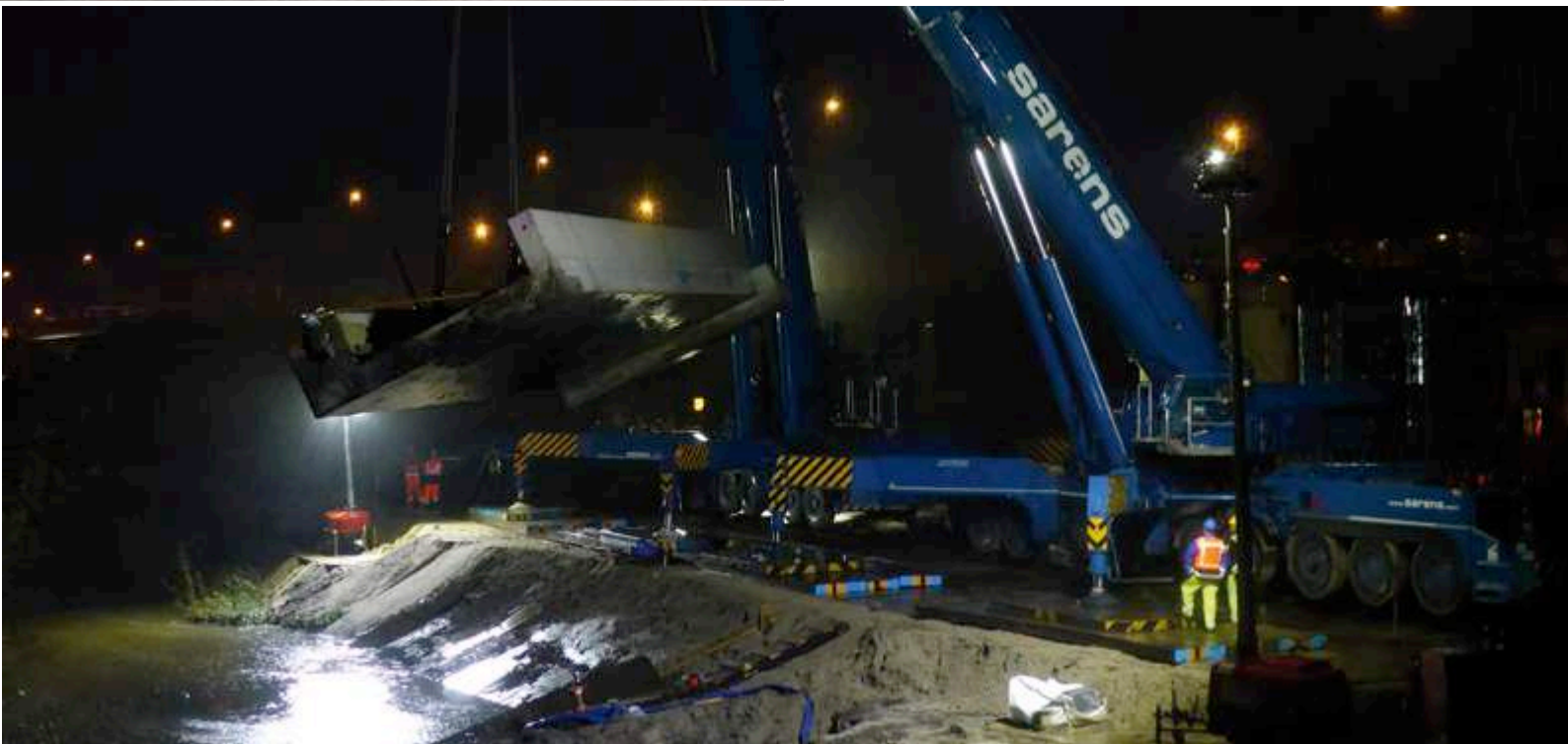
ChemSelect

ICCONS
Serious Connections



Project Data

Weight Bridge Deck	: 210 tons
Anchor Type	: VDP M30
Number of Anchors	: 16
Embedment Depth	: 550 mm





1500t Test Bench



B+BTEC

www.bbtectools.com

ICCONSTM
Serious Connections

ChemSelect

ICCONSTM
Serious Connections

ChemSelect

ICCONSTM
Serious Connections



Project Data

Anchor Dimension	:	M30 x 500
Number of Anchors	:	600
Steel Quality	:	8.8 Zinc Plated
Anchor hole	:	Diamond Drilled
Anchor Type	:	BIS-PE Pure-Epoxy 3:1

